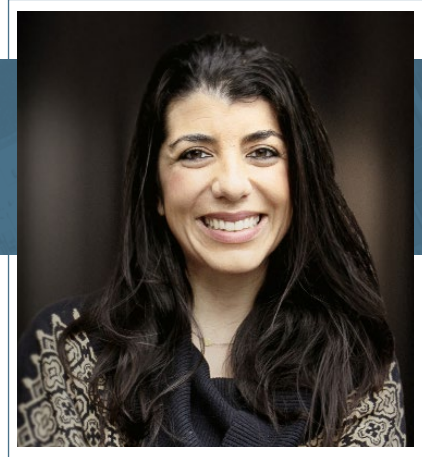




MICHELLE D. ROZAKIS

Partner | Principal Broker - Retail



EXPERIENCE

CAPACITY COMMERCIAL GROUP, LLC | 2020 - PRESENT
PARTNER, PRINCIPAL BROKER - RETAIL

REAL ESTATE INVESTMENT GROUP, INC | 2010 - 2020
PARTNER, PRINCIPAL BROKER - RETAIL

OWNERSHIPS AND CLIENTS REPRESENTED

- › [Alamo Manhattan](#)
- › [Fred Meyer \(Kroger\)](#)
- › [Holland Partner Group](#)
- › [Simpson Housing](#)
- › [Arbor Homes](#)
- › [GID Real Estate Inv.](#)
- › [Hurley Development](#)
- › [Unico Properties](#)
- › [Asana Partners](#)
- › [Harsch Invest. Prop.](#)
- › [Mill Creek Residential](#)
- › [Wood Partners](#)

HIGHLIGHTED MAJOR TRANSACTIONS & DEALS

RETAIL LEASING

- › **Progress Ridge Townsquare** | *Beaverton OR*
 - › 197,000 SF Retail, Anchor, Restaurant, Medical and Service Space in Boutique Shopping Center
- › **Hazel Dell Marketplace** | *Vancouver WA*
 - › 180,000 SF Retail, Anchor, Restaurant and Service Space in Community Shopping Center
- › **Parkway Village Phase 1** | *Sherwood OR*
 - › 132,000+ SF Retail, Anchor, Restaurant and Service Space in Multi-Phase Commercial Center
- › **The Plaform District at Orenco Station** | *Hillsboro OR*
 - › 48,000 SF Ground-Floor Commercial Space in New Mixed-Use Community
- › **The Shoppes at Progress Ridge** | *Beaverton OR*
 - › 34,867 SF Retail & Office Space in Multi-Building Commercial Development
- › **Moder Belmont** | *Portland OR*
 - › 11,368 SF Ground-Floor Commercial Space in New Mixed-Use Apartment Development

ABOUT MICHELLE

Michelle specializes in both Landlord and Tenant Representation with a focus on new construction projects. With a Master's Degree in Conflict Resolution, her mediation and communication skills play a vital role in developing and building strong fundamental relationships as well as structuring successful transactions between tenants and landlords. Having been involved in a large number of mixed-use and new construction projects, Michelle prides herself on her creativity, adaptability and communication skills.

Born and raised in Portland, OR, Michelle is a proud Oregonian. A mom of three, she loves to spend her time cooking and traveling around with her family in their Airstream camper.

Michelle's industry memberships include: International Council of Shopping Centers (ICSC), Oregon & SW Washington Commercial Association of Brokers (CAB), and the Site Source Retail Broker Network. Michelle is the recipient of the CAB *Retail Team of the Year Award* for 2018 - 2021.

OFFICE: 503.222.1195

CELL: 503.869.1471

MROZAKIS@CAPACITYCOMMERCIAL.COM

INDUSTRY AWARDS & RECOGNITIONS

- 2020 Women in Real Estate | Connect Media CRE
- 2021 Retail Team of the Year | OR & SW WA Commercial Assoc. of Brokers
- 2020 Retail Team of the Year | OR & SW WA Commercial Assoc. of Brokers
- 2019 Retail Team of the Year | OR & SW WA Commercial Assoc. of Brokers
- 2018 Retail Team of the Year | OR & SW WA Commercial Assoc. of Brokers

EDUCATION • MEMBERSHIPS • CREDENTIALS

- Portland State University - MA Intercultural Conflict Resolution | 2009
- University of Colorado at Boulder - Bachelor of Science | 2003
- International Council of Shopping Centers (ICSC) Board - Member
- Oregon & SW Wash. Commercial Association of Brokers (CAB) - Member
- Site Source Retail Broker Network - Member
- Licensed Real Estate Broker, State of Oregon



805 SW Broadway, Suite 600 | Portland, OR 97205

p. 503.326.9000

f. 503.425.1006

capacitycommercial.com